

# Product Summary

# VT-55

**Turntable Diameter:** 5.6m

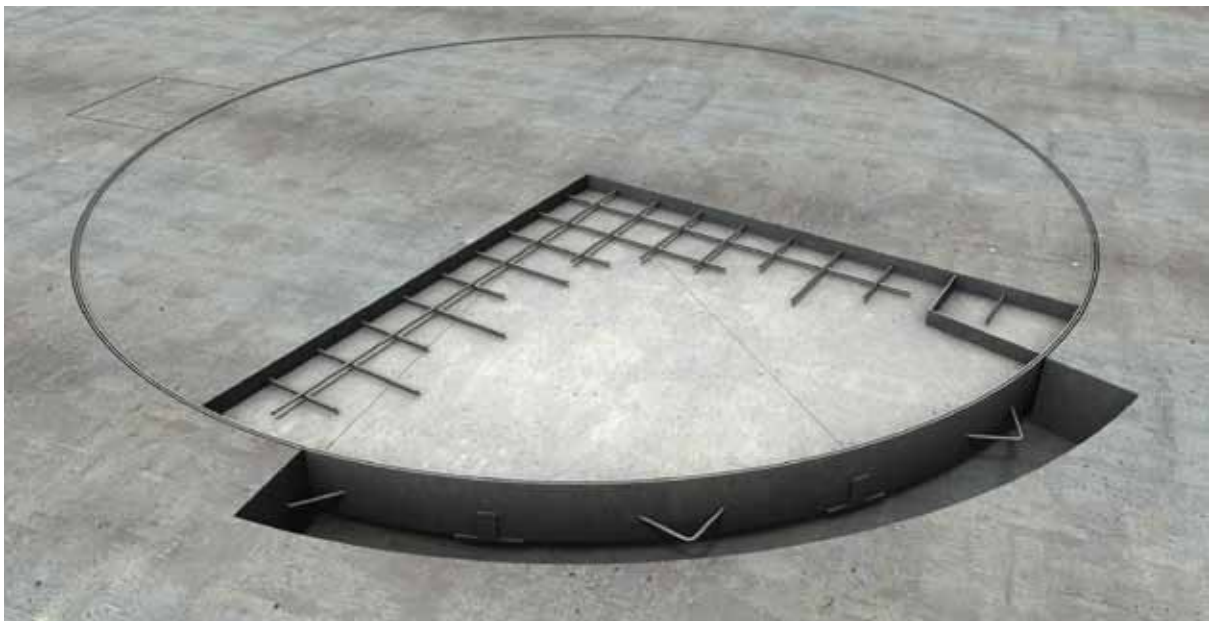
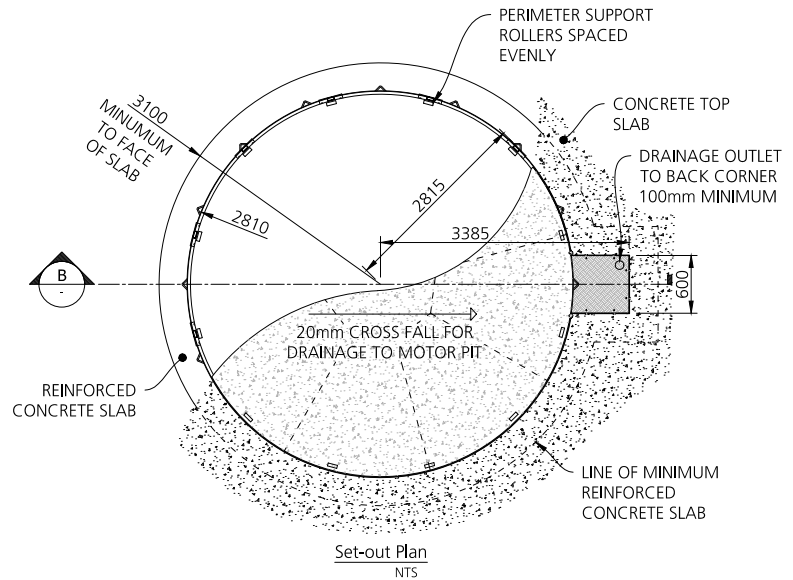
**Turntable Capacity:** 4.0 ton

**Frame Finish:** Hot dipped galvanised

**Deck Finish:** 100mm Provision for concrete

**Turntable Controls:** Motorised as standard, forward/reverse with manual push button and remote control.

**Brief Description:** This rotating car turntable is the perfect parking solution if you have two medium sized cars. In fact, difficult parking in limited spaces is now as easy as the press of a button. This motorised turntable will quietly rotate your car up to 360° and remote controls are available for all models. A parking solution that is also beautiful to look at, the concrete finish can be customised to blend into the surrounding environment.



© Copyright Spacepark Global Pty Ltd. Please note that by using this drawing in any format, you accept that Spacepark owns the copyright. You are licensed to use this drawing for any Spacepark turntable on which Spacepark are tendering, and you shall not knowingly allow others to copy this drawing. Obtain appropriate licences from Spacepark if you (or anyone employed or engaged by you) intend to use the intellectual property rights of Spacepark in performing your obligations under any contract. Spacepark reserves the right to amend specifications without notice for product improvement.



A U S T R A L I A | C A N A D A | E U R O P E | N E W Z E A L A N D | U N I T E D K I N G D O M | U S A

TOLL FREE: 1800 689 890 P: 1300 640 070 F: 1300 640 072 W: spacepark.com PO Box 6005, Baulkham Hills BC, NSW 2153, Australia  
SPACEPARK GLOBAL PTY LTD. ABN. 38 089 309 181

SPA006\_PS